

Artists’ Biographical Statements

Eliza Bullock
Eliza received a BFA in Graphic Design from Ohio University. Her graphic design career began in San Francisco and led Eliza back to New York by way of Italy before settling in Kansas. While in San Francisco she discovered monotype printmaking, out of a need to put hand to paper, and developed her skills through workshops while continuing to work as a designer. A move to Kansas afforded Eliza the opportunity to more fully explore her artwork. She now exhibits in galleries across the nation and is in private collections across the U.S. and worldwide.

Liz Campbell
Art Emergency Collective. Liz Campbell is a fiber artist living in Lawrence, Kansas. She loves combining her love of sewing with her love of painting to create 2 and 3 dimensional works of art. These works include her own hand dyed fabrics, commercial fabrics, quilting, pastels, paints, thread painting, and unconventional materials. Some of her favorite themes are flowers, insects, and abstracts.

Yvonne Channel
Art Emergency Collective. Yvonne Channel was born in Joplin Missouri in 1966. In high school she became interested in drawing and in stained glass. In 1990 she earned a Bachelor of Arts degree with an emphasis in Computer Graphics from Missouri State University (where she began working in oils) and in 1993 she completed her Master of Fine Arts degree in Computer Graphics at Pratt Institute in Brooklyn New York. Yvonne returned to the Midwest, working for six years as an animator and video production coordinator at an educational software company in Pittsburg, Kansas and in August of 1999, she moved to Lawrence and found a job with another education software company in Kansas City. Living in Lawrence Kansas has fueled her artistic inspiration and has provided opportunities to hone her drawing and painting skills. Yvonne's drawings capture a softness and vulnerability of the human figure. Her expressionistic style of painting and her use of bright, earthy colors reflect her sensual approach to what she believes is an interaction between the artist and the medium.

Ellen Chindamo
Ellen Chindamo is a lifelong Lawrence jeweler who fell in love with metalsmithing early in her life. She enjoys creating clean, simple and elegant pieces that are designed to be timeless.

Laurie Culling
Realistic to abstract in style, Laurie works with acrylics on canvas, mixed media on gypsum, hand-made paper collage, beads, fabric, monotypes, and more. Her artwork is subtle, understated, and whimsical, with metaphysical resonance. Laurie has received numerous awards and the 2002 Phoenix Award in Visual Arts for her artistic achievements and over 25 years of contributions to the visual arts community. Her artworks are in many collections, including the Spencer Museum of Art's Classroom Collections. She earned a BFA in Painting and Drawing from KU. She is a 1982 co-founder of Phoenix Gallery; a former co-president and former vice-president of the Lawrence Art Guild, and was Assistant Director of the Guild's 1109 Gallery (2009). Laurie volunteered as art exhibit coordinator for the Public Library for 20 years.

Downtown Tuesday Painters
The Downtown Tuesday Painters are a group of seniors using the Douglas County Senior Center as our studio for over 20 years. We are a group of 16 regulars and drop-ins. Our artists work in oil, water color, pen and ink, acrylics, clay, wood carving, etc. We have found a place to express ourselves, learn new things, and make good friends.

Diana Dunkley
Diana is a full-time artist and owner of Studio 3D, exhibiting artwork regionally and internationally. She works in painting, mixed media, assemblage, watercolor, printmaking, sculpture, and installation/performance. She is a member of the international collaboration The Pleiades Project with artists from Australia and artists from the US. Through the course of her career, Diana has completed many performative and interactive pieces, and will be showing the videos during the 2019 ArtWalk. Diana also teaches art classes and workshops, as well as working individually with artists of all ages.

Marion Dyer
Art Emergency Collective. Creativity is more than art; it is wellbeing. It allows us to respond to what is, while not cutting off our dreams about what could be. Marion Dyer was raised in rural Maine and has a degree in anthropology from the University of Kansas (the alma mater of her grandmother, Mabel.) Whiling away the hours, as a child in the back woods of New England, she stitched anything her imagination could come up with but didn't begin quilting until she was in college. Marion's love of color, form, and cloth comes through in her elegant shibori silk scarves, elemental doll shapes, and zakka style art quilts and pillows.

Anne Egitto
Anne Egitto moved to Lawrence, Kansas in 2008 to work on her doctorate degree in anthropology. She began selling her pottery in 2009 and received professional encouragement by being accepted into the 2012 Orion International Cone Box Show. She completed her doctorate degree in 2014 and now teaches college part time while keeping busy in the role of director of the Lawrence ArtWalk. Anne creates functional pottery using porcelain and stoneware and hand paints original designs on her pieces. She will have new work/designs available for ArtWalk.

Kathi Fair
65 years not knowing I was an artist, one day I woke up to find that maybe I am. Self taught and seldom shown I am a medium for the spirits who come thru me and in to the glass. My art will cause you to wonder, think and question. I bring life to what otherwise might just be colored sand and command some of it to speak.

Jane Fortun
For Jane, painting, particularly "Plein Air" (outdoors) is like meditation—everything else falls away, and she is totally present in the NOW, a beautiful moment suspended outside of time. Any worry disappears as Jane becomes completely absorbed in her work. This is the beauty of Plein Air painting! Currently, Jane is enjoying the capturing of human form with the Valley Lane Artists. This practice of life drawing is one of the oldest, ongoing traditions in the world of art. It helps one to "see" and record the endless shapes and forms of the human, in any medium the artist chooses. Jane's background is art school in

Boston, and night classes at RISD in Providence, plus national and regional workshops.

Jan Gaumnitz
Jan Gaumnitz has been an active artist in the Lawrence community since 1967. She works in 4 mediums: painting, sculpture, photography and printmaking. Nature has been her strongest influence although anything that catches her interest is relevant. Styles of presentation range from realistic to abstract with exploration of materials, new techniques always important.

Hobart Jackson
Jackson is a retired KU professor after 40 years teaching in the School of Architecture. Educated at Princeton, Carnegie-Mellon, and Southern Illinois Universities in engineering; graphic, environmental, and photographic design; life drawing and fine art painting have paralleled his teaching career. He co-founded with others of KU ties, this life drawing group now known as the Valley Lane Artists.

Shakura Jackson
Shakura Jackson's art includes photography and tabletop sculpture which she calls "antique mixups." Most of the Valley Lane Studio Artists are members of a life drawing group which meets regularly on weekends. The drawings and paintings exhibited are figurative art works based on or abstracted from the nude human figure. This group originated from classes taken at the Lawrence Arts Center by KU faculty and staff members and dates from the mid 1980s.

Matthew Jarmer
In 2018, after over 10 years as a professional graphic designer, Matthew made the move to full time independent artist, designer, and woodworker. Taking up residence at the East Side Woodshop, Matthew has spent the last two years experimenting with styles and honing his design and woodworking skills. Working primarily with wood, Matthew's work spans a wide range including functional furniture, wood products, jewelry, fine art, wall hangings, and sculpture. Matthew also has an independent line of apparel featuring Kansas and Lawrence themed designs.

Ted Johnson
Ted is one of the founding members of this life drawing group that began meeting in the 1980sand continues today. He enjoys setting down LIFE in drawings and how members of the group DRAW LIFE out of each other. "Our drawings convey our lively celebration of life in the studio." Professor emeritus of French, he taught French language, literature, and culture, especially the interrelations of literature and the arts in France. Additionally he taught Freshman Honors tutorials, and Humanities courses, with particular emphasis on the interrelations of the seven Liberal Arts. Ted conducts his well-known annual spring Stop Day walking tour of Mount Oread.

Typewriter Tim Jordan
I am a St. Louis native with a BFA from KU. I combine molten glass with blowtorches typewriters.

Julie Kingsbury
Julie Kingsbury has a BFA in Metalsmithing and Jewelry design from KU. She has been selling her work at Arts and Crafts shows since 1987. She had a store Downtown for 12 years, closed it for a couple of years to take a break and now she's back!

Jytte Klarlund
Jytte has been a passionate gardener most of her life creating a kaleidoscope of colors throughout the seasons. Winters have been a challenge trying to fill the creative void left from gardening. A friend suggested a stained glass class a few years ago. After a couple of classes it was clear that Jytte has found a new creative outlet. While birds and flowers are popular motifs in her larger pieces, she prefers organic shapes and colors found in nature and often uses materials from her own garden in creating her mobiles.

Sandy McKenzie
Sandy McKenzie approaches painting in the spirit of mindfulness, so that the process of painting becomes a meditation. She does not begin with a drawing or photograph, but by engaging with the materials. She works in watercolors, acrylic paint, and colored pencils on different types of paper. Her work is also influenced by the physical and spiritual landscape of New Mexico, where she lived prior to moving to Kansas.

Tony Peterson
My work doesn't fit neatly into any particular category however the nature of structures and the structures of nature are a common theme. The focus is often on particular elements of light, pattern, or color rather than a documentation of the object or scene itself. Periodically I'm drawn to a subject because of "something" without knowing precisely what it is. It's only after I've photographed it that my eyes can see what my mind did. Consequently, much of my photography has to be visually explored because there are often elements not immediately obvious.

Kathy Pflaum
Kathy has been a Fiber Artist for about 15 years. She started out as a traditional quilting artist and then there was a turning point where she began doing more fiber artwork. She initially branched out with folded fabrics and some hand dyed fabrics. Today she practices a variety of fabric/fiber dyeing and printing techniques to create her artwork. Kathy is a Kansan, born and raised in northeast Kansas. She grew up in Topeka and graduated from Washburn University. She lived in the upper Midwest in Chicago, Appleton and Toledo as well as Tampa, FL prior to moving back to Kansas. Kathy resides and works in Lawrence, Kansas today.

Angie Pickman
Angie Pickman is a nationally recognized cut paper artist that combines the art of traditional paper cutting with collage to create intricately detailed works of art and animations. Her work is heavily inspired by her love of nature and the tranquility of the terrain of rural Kansas. She has been featured in Martha Stewart Living and Midwest Living magazines, and her animation work premiered on PBS in 2016 in the documentary Daughters of the Forest. She has won numerous awards for her work, including an Independent Music Award for album art. Her first children's book, Merry Menagerie: Animal Antics from A to Z, came out in 2018.

Nan Renbarger
Art Emergency Collective. Nan was born and raised in Topeka but escaped its conservative clutches in 1968, landing in Lawrence to go to school at KU. Next thing she knew, she was wrapped up in artistic expression in the form

of a wholegrain bakery. That earth tone palette morphed into vibrant color schemes used in fiberscapes" on and off the wall art, bags, vessels, and clothing. Nan colors most of her fabrics by dyeing, painting, printing, stenciling, stamping, and stitching. Spontaneity is precious to her as she is inspired by the world around her that is anything but static. As she follows her nose, her heart, her intuition up and down garden paths, trails, country roads, byways, and thought waves, the creative juices flow through her fingers onto the physical plane via fibers of every description.

Tom Schmiedeler
The focus of my photography has been geography in all of its intriguing and mystifying facets. I originally took photographs to provide my geography students with examples of the great physical and cultural diversity we studied, particularly that which relates to the lives of ordinary people who create extraordinary places, and to the wonders of the natural world. Examples include images of Fingal's Cave of the Outer Hebrides, Scotland; the Shepherd of the Moorlands in the Lüneberger Heath of north Germany; the Fishermen of Nazaré, Portugal; and a spider's masterpiece in our back yard! The art of photography for me has been capturing a moment in time that best expresses the essence of a place and the lives of its people.

Celia Smith
Celia works from Nature and People, creating landscapes and animal paintings, as well as figurative and historical pieces using acrylic paints on canvas and paper. She grew up in Spain and the White Towns of Andalucia, where she spent many summers, is a recurring theme in her work.

Barbara Solberg
As a landscape painter for many years, Barbara has sought to keep her work innovative and imaginative by trying new techniques and processes whether through painting in soft pastels, acrylic or oil, and with print-making. Aspiring to incorporate more texture, she began to use cut and torn paper in collage form, which, by its very nature, will produce abstract results. Gradually, she began including material and found objects such as stones, bones, or shells affixed to her work. On display will be pastel and mixed media landscapes continuing the Gaia theme of nature and environmental issues. Note cards also available for purchase. She has exhibited widely and won numerous awards for her work. She teaches classes for the Osher Institute and in her home studio. She lives with her husband, Tom Schmiedeler, and two cats in a home on a bluff overlooking the Kaw.

Audrey Taylor
Audrey Taylor is a graphic designer who began Wildfire Metal as a creative outlet when she purchased a plasma cutter in 2013. Since then her metal art has grown from simple flowers to sunflowers, butterflies, lady bugs, owls, goats, wreaths, and numerous custom items. Each Wildfire Metal piece is unique and created from recycled metal and car parts. She has used metal from old barns, awnings, barrels, car hoods, fenders, water heaters, campers, and any other metal she finds discarded.

Susan Theroff
Susan is an Artist, Dreamer, and eternal Optimist. Inspired by the beauty of Nature, the oddity of Dreams and the

Magic present in our everyday life she sees abundant life in everything that surrounds her and living in the countryside is a constant reminder of how connected we can still be to Nature. Susan's art often reflects on a time when humans still felt and understood their connection with the natural world, working within its rhythms rather than trying to change or control it. People once believed in messages that nature would deliver. In her most recent work, Susan is seeking out the relationship between women, nature, mythology and drawing upon it as a narrative of self-empowerment.

Cathy Tisdale
My images are inspired by organic forms. I am fascinated by sea corals and creatures. Also the canyon lands in southern Utah have provided me with colors and compositions for my work. I have been working with porcelain for many years and have recently started working with a material called hyperfuta, which is composed of Portland cement, peat moss, and sand. This is light weight and durable. It also has the advantage of not being limited by size. I will be showing several pieces in the Lawrence Artwalk this year.

Jen Unekis
Art Emergency Collective. Jen was born in California and moved to Kansas when she was 4. She was raised on a farm and moved to Lawrence to attend KU, and never felt the need to leave. She currently has studio space at Art Emergency, and lives by the river with her husband David and daughter Adeline Grace.

Darin White
Darin M. White is an artist and designer working as a sculptor of fine and functional art. White and his wife Shannon, a painter and arts advocate promote creativity and action, and encouraging others in their art and understanding. In 2010, they helped launch the Final Fridays events and are very involved in the arts and local community.

Shannon White
Shannon White is a local multidisciplinary artist and art educator sharing her drawings and paintings.

Jewell Willhite
Jewell Willhite is a graduate of Iowa State College in Applied Art. She has been painting since that time. She and her family have lived in Lawrence since 1969. She paints with acrylic paint and often paints on site. Subject matter includes local landmarks, nearly rural areas, Colorado scenes, and scenes from far away places. Landscapes are often painted with a palette knife.

Bryan Young
Bryan Young experiments with geometric shapes and patterns to create functional pieces of art. He uses a broad array of wood species to craft boxes, jewelry, cutting boards, and more. Bryan began his exploration into woodworking to build sailboats and kayaks, and has recently turned to smaller and more detailed construction.

Roura Young
Roura Young uses watercolor to study the atmosphere that surrounds us. Light, air, wind, sound, quiet, emotion, space – all these affect how we interpret what we see. Looking at a distant horizon, does one paint just the horizon line or is one painting the air in between? Can one paint the wind or conjure up the quiet rustle of leaves?




PHOENIX GALLERY

Featuring the work of over 400 local, regional, and national artists

825 Massachusetts
Lawrence, KS 66049
785-843-0080

phoenixgalleryart.com

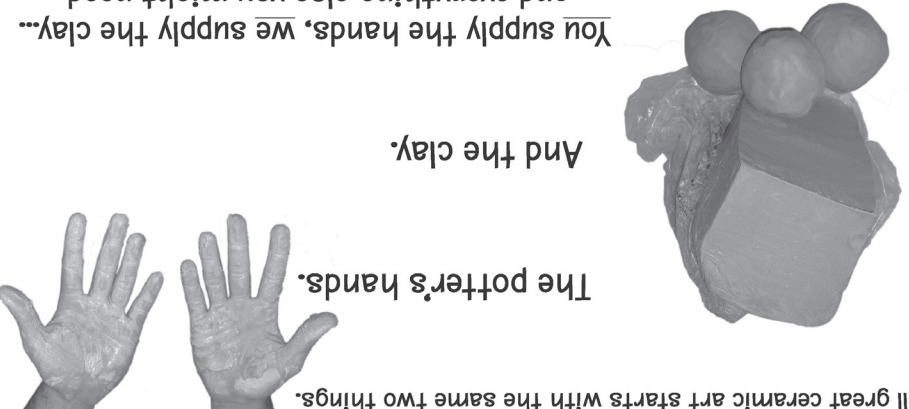




BRACKER'S

841-4750 (local)
888-822-1982 (toll free)
www.brackers.com
1831 E 1450 RD
Lawrence, KS 66044

All great ceramic art starts with the same two things.
The potter's hands.
And the clay.



Proud to be a part
of the Spirit of Lawrence

Fresh Specialties Daily
Delicious Sandwiches,
Soups & Salads
Fresh Brewed Beers

FREE STATE
BREWING COMPANY
www.freestatebrewing.com

Large Parties Welcome
A Lawrence Tradition
Come Taste for Yourself
Open 7 Days a Week

636 MASSACHUSETTS, LAWRENCE, KS • 843-4555



ESSENTIAL GOODS

handcrafted local + independent works

+

SPARROW GALLERY

933 MASSACHUSETTS // DOWNTOWN LAWRENCE

Support the businesses
that support
the Lawrence ArtWalk!



Wheatfields
Bakery Cafe

Lawrence ArtWalk 2019 is produced and
presented by The Little Pottery Ventry LLC
PO Box 442121, Lawrence, KS 66044
216.904.6288 • www.littlepotteryventure.com
Anne Egitto, President

• Celia Smith, Lawrence ArtWalk 2019 Featured Artist:
• Angie Pickman: Lawrence ArtWalk logo illustration
• Lawrence Arts Center: distribution of artists' materials

Have a great ArtWalk!



Anne Egitto, Director • Lawrence ArtWalk
www.lawrenceartwalk.org

Welcome to Lawrence's original art walk! Lawrence ArtWalk 2019 is our 24th annual artists' open studios event and features the talented visual artists of Douglas County. The ArtWalk is free, self-guided and can be started from any location. Over 35 artists are exhibiting their work at 20 locations in and around Lawrence. We hope you will enjoy visiting private artists' home-based studios, where most artists will be displaying their work, and other venues that will be hosting artists' groups or individual artists. Being able to meet artists in their creative work environments will undoubtedly enhance your experience of purchasing and collecting highly original works of art. In addition, some of our artists will be holding public receptions on Friday and Saturday evenings and a few artists will be giving special demonstrations of their artistry during the ArtWalk weekend. Lawrence ArtWalk locations are open Saturday 10am-6pm and Sunday 12-6pm unless otherwise noted in this guide map. Each location is keyed to a numbered listing on this map, and is identified during the ArtWalk by yard or window signs featuring red and white graphics. Samples of each artist's work, which are for sale, may be found on the Lawrence ArtWalk 2019 section of our website. To view an artists' work at other times, please contact the artist to make an appointment or contact the location that displayed the work. While in Lawrence, please also check out the services and products of our fabulous sponsors, without whom we could not bring this event to you. All information was correct at the time of publication. For the latest Lawrence ArtWalk info, visit our website or Facebook page, or follow us on Instagram and Twitter.



LAWRENCE
ARTWALK

LAWRENCE
ARTWALK

Lawrence
ArtWalk
2019



"Alozaina Nueva" by Celia Smith, Featured Artist

October 12th & 13th • Saturday 10am-6pm • Sunday Noon-6pm

24th annual self-guided tour of Lawrence artists' studios and other art spaces featuring the visual artists of Douglas County, Kansas

GUIDE MAP

Lawrence's Original art walk!
www.lawrenceartwalk.org

1 2554 Stowe Drive

South East corner of Stowe Drive and Brett Drive. Parking on East side of Brett Drive and Stowe Court. Parking also available on South side of Brett Drive

Public Reception Friday 6pm - 9pm

HAVA STUDIOS



Wood, sculpture, drawing, painting, digital art, mixed media (3-D), glass \$18 - \$15,000

Hava Studios
2554 Stowe Drive, Lawrence, KS 66049

Artists:
Darin White
Shannon White
Typewriter Tim Jordan

2 2903 Schwarz Road

My house is located behind the Dillon's store at 6th and Lawrence Ave.

JEWELL WILLHITE



Painting \$75 - \$400

2903 Schwarz Road, Lawrence, KS 66049
jwillhite@sunflower.com
jewellwillhite.wordpress.com

3 1335 Valley Lane

Just East of Iowa St off of University Drive. Valley Lane is one block long and turns into Raintree Place. "1335" on a large rural type mailbox marks the gravel driveway leading west to our "red barn" -like studio, surrounded by trees and vegetation. Park in driveway. On street parking can be difficult.

VALLEY LANE STUDIOS



Drawing, photography, sculpture \$5 - \$250

Valley Lane Studios
1335 Valley Lane, Lawrence, KS 66044
hvj12.j@gmail.com

Artists:
Hobart Jackson
Shakura Jackson
the Life Drawing Artists

4 1628 Dudley Court

Studio entrance is on back side of home. It can be accessed by following the path around west (left) side of home then take the stairs down and into the studio.

ELIZA BULLOCK



Mixed media (2-D), jewelry \$40 - \$1,200

Eliza Bullock Art + Design
1628 Dudley Court, Lawrence, KS 66044
www.elizabullock.com

ELLEN CHINDAMO



Jewelry \$55 - \$350

The Little Pottery Venture
724 Rhode Island Street, Lawrence, KS 66044
littlepotteryventure@gmail.com
www.etsy.com/shop/LittlePotteryVenture

GENERAL NOTES

ACCESSIBILITY

Unless otherwise noted in the individual listing, locations must be assumed to be inaccessible. Please contact the artist(s) at any given location to confirm any details on accessibility.

ARTISTS' INFO

Contact information for each artist or collective is given at the end of the individual listing. Any questions pertaining to the location (including directions or accessibility), hours, events, or artwork should be directed to the individual artist or collective.

5 800 Illinois Street

West entrance is accessible via driveway on south, with 4 steps to sunroom porch.

Light refreshments will be served.

LAURIE CULLING



Painting, mixed media (2-D) \$3 - \$5,000+

Mylar Art Studio
800 Illinois Street, Lawrence, KS 66044
artistlaurieculling.com
www.laurieculling.com

6 923 N 2nd Street

Wildfire Metal will have an Open House during the ArtWalk in partnership with Red Design Inc., Englewood Florist, and Orange Cat Records. We will have live music Saturday, time yet to be determined.

AUDREY TAYLOR

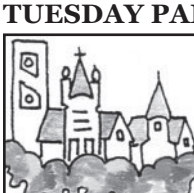


Metal \$5 - \$120

Wildfire Metal
923 N 2nd Street, Lawrence, Kansas 66044
audrey@wildfiremetal.com
wildfiremetal.com

7 745 Vermont Street

DOWNTOWN TUESDAY PAINTERS



Painting

Douglas County Senior Services Center
745 Vermont Street, Lawrence, KS 66044

8 17 W 9th Street

On 9th St. Between Weavers and Wheatfields.

We will have snacks and beverages during both days of the event.

JULIE KINGSBURY



Jewelry \$12 - \$300

Jewelry by Julie
17 W 9th Street, Lawrence, KS 66044
jewelrybyjulie@netzero.net
jewelrybyjulie-ks.com

9 724 Rhode Island Street

The single block of Rhode Island is one way traffic so access is from 8th Street. Parking is available either on the street or in a city lot across the street. A four inch step onto the porch and a two inch step into the house so it's accessible to anyone using a cane, crutches, or a walker.

ANNE EGITTO



Ceramics \$10 - \$350

The Little Pottery Venture
724 Rhode Island Street, Lawrence, KS 66044
littlepotteryventure@gmail.com
www.etsy.com/shop/LittlePotteryVenture

SPECIAL FEATURES

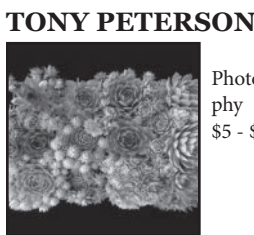
Any demonstrations, special features, receptions, or extended hours are indicated in the individual listings in gray text. All artists are required to make their art available during the normal hours of Saturday 10pm-6pm and Sunday Noon-6pm.

LIABILITY

Visitors participate in this event at their own risk; and thereby shall not hold Little Pottery Venture LLC, producer and presenter of Lawrence ArtWalk 2019 or its authorized representatives liable for any claims whatsoever arising out of their participation in this event.

9 724 Rhode Island Street

(continued)



Photography \$5 - \$300

724 Rhode Island Street, Lawrence, KS 66044
toekneppeterson@gmail.com

Guide map printed by Printing Solutions, Lawrence.

10 620 E 8th Street

Metal Building across the street from BonBon and Poehler Lofts. Building entrance is ADA compliant. Restrooms are not.

Public Reception Friday 5pm - 8pm

MATTHEW JARMER



Mixed media (3-D), wood, sculpture \$20 - \$1,500

East Side Woodshop
620 E 8th Street, Lawrence, KS 66044
matthewjarmerllc@gmail.com
www.matthewjarmerllc.com

11 720 E 9th Street #1D

The entrance is on Delaware between 8th and 9th streets. There is a Rural Pearl Studio banner hanging outside.

Demo on demand all day Sat & Sun

ANGIE PICKMAN



Mixed media (2-D) \$5 - \$4,500

Rural Pearl Studio
720 E 9th Street #1D, Lawrence, KS 66044
angela@ruralpearl.com
www.ruralpearl.com

12 721 E 9th Street

Just east of 9th and Delaware Streets. Studio is a big green warehouse. Parking along the west side of the big green warehouse. Entrance is street level and the studio has an ADA compliant bathroom.

Saturday and Sunday at 3pm I will give a freeform embroidery demo which will last about 30 minutes. Ask about word seeds. Sunday at 1pm: Thread painting demonstration.

ART EMERGENCY



Fiber, painting, drawing \$5 - \$300

Art Emergency Group
721 E 9th Street, Lawrence, KS 66044

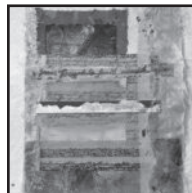
Artists: Liz Campbell, Yvonne Channel, Marion Dyer, Justin Marable, Charlotte Larson Pemberton, Nan Renbarger, Dustin Sypher, Jen Unekis

13 1019 Delaware Street

Across the street from Hobbs Park in East Lawrence. Look for the red door. Temporary ramp provided during ArtWalk hours at the rear entrance off the alley between Pennsylvania and Delaware. "1019" is on the attached garage. Please call for accessibility during non-ArtWalk hours.

Public Reception: All day Saturday and Sunday during ArtWalk hours. Demo: Diana will demonstrate "Varied Edition" print-making at 2pm on Saturday, and "hand-printing without a press" techniques at 2pm Sunday. Special Features: A selection of performative videos made throughout the course of Diana's career will be shown all day both days. Daily give-away: a poster of the painting "South Park," created by Diana and produced by Bert Nash CMHC and Mainline Printing, upon request.

DIANA DUNKLEY



Painting, mixed media (2-D) \$10 - \$10,000

Studio 3D
1019 Delaware Street, Lawrence, KS 66044
ddunkley3d@earthlink.net
www.facebook.com/pages/Diana-Dunkley-at-Studio-3D/46737658674412?ref=profile

14 1641 Mississippi Street



Wood, jewelry

Young Studios
1641 Mississippi Street, Lawrence, KS 66044
cbryanyoung@gmail.com

ROURA YOUNG



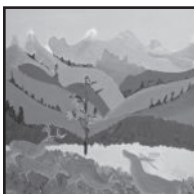
Painting, mixed media (2-D)

Young Studios
1641 Mississippi Street, Lawrence, KS 66044
cbryanyoung@gmail.com
http://www.etsy.com/shop/RouraYoung

15 907 W 27th Terrace

Location is in South Lawrence, close to Broken Arrow Park and 2 blocks from South Junior High. Parking on driveway or North side of 27th Terrace.

CELIA SMITH



Painting \$12 (cards) - \$ 1,500

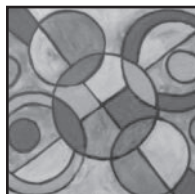
Celia Smith Studio
907 W 27th Terrace, Lawrence, KS 66046
rjsmith@ku.edu
www.celiasmith.net

16 2908 Atchison Circle

Atchison Circle is only accessible from 31st St. just east of where 31st St. turns and becomes Kasold. From 31st St. turn north on Atchison Ave. and then right onto Atchison Circle. 2908 will be on your right, near the top of Atchison Circle. aThe walk from the street to the front door is steep. Feel free to park in driveway.

Public Reception Saturday 5pm - 7pm

SANDY MCKENZIE



Painting \$5 - \$250

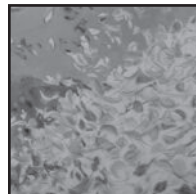
Healing Art Studio
2908 Atchison Circle, Lawrence, KS 66047
sandyraigmckenzie@gmail.com

17 943 N 1500th Road

Located on N. 1500 Rd. also called Lake Estates Dr. From the intersection of George Williams Dr. and Bob Billings Parkway head south on George Williams for 2 blocks. Turn right on Lake Estates/N. 1500 Rd. Turn left at first driveway by big rock with 943 written on it. Parking provided near the house and studio. We have 3 display areas. The upper level to the studio which is a gallery has 3 steps so is not easily accessible for wheelchairs.

Friday night, between 6pm and 8pm will feature an opening celebration of ArtWalk that will be open to the public.

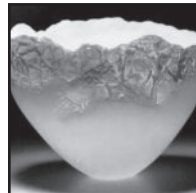
JAN GAUMNITZ



Painting, sculpture, photography \$5 - \$5,000

Jan Gaumnitz Woodridge Studio
943 N 1500th Road, Lawrence, KS 66049
jangaumnitz@gmail.com
www.jangaumnitzstudio.com

CATHY TISDALE



Ceramics

Summit Studio
943 N 1500th Road, Lawrence, KS 66049
cathyleetisdale@gmail.com
http://www.cathytisdaleart.com/

18 478 N 1950th Road

See inset map. From Lecompton, go one mile W. to 500E, turn south 1.5 miles to N. 1950, turn west, to first driveway on the right, red gate. Watch for signs. There is ample parking with a brief walk, but if you need assistance please pull up to the front door. The gallery is all on one level. A fall drive in the country will refresh your senses. The art might speak to you, whisper to you or yell loudly, but the natural setting you find yourself in will calm your soul.

For those wishing a little quiet time on Sunday morning, you are welcome to park and walk the moved paths in serenity from 10:30am to noon. The artistic beauty that will surround you is a spiritual delight. We will open the gallery at noon.

KATHI FAIR



Glass, digital art \$5 - \$1,200

HauteFlash Glassworks
478 N 1950th Road, Lecompton, KS 66050
kathi@billfair.com

19 35 N 2190th Road, Lecompton

See inset map. A lovely country drive 25 minutes west of Lawrence. From 6th & Wakarusa take highway 40 west for about 15 miles; turn right on Green Rd., go north for 0.4 miles to a T-junction, turn right (east) onto 2nd St., which becomes 2190th Rd. Drive for 2.8 miles until you see our metal wildlife gate on the south side of the road. Steep driveway, use low

19 35 N 2190th Road

(continued)

gear. No stairs on ground level if accessed through garage. Stairs to second floor.

2pm - 2:30pm: Artist's demo of mixed media, murals & techniques. Extended hours: Sunday 10am - 6pm

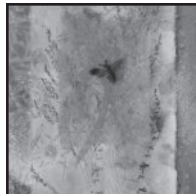
TOM SCHMIEDELER



Photography \$95 - \$175

35 N 2190th Road, Lecompton, KS 66050
tom.schmiedeler@washburn.edu

BARBARA SOLBERG



Painting, mixed media (2-D & 3-D) \$10 - \$1,300

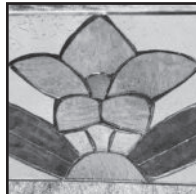
Creative Hand Studio
35 N 2190th Road, Lecompton, KS 66050
Barbara@bsolbergart.com
www.bsolbergart.com

20 259 N 1250 Road, Berryton

See inset map. Located on the West side of Clinton Lake, just South of Stull. A delightful drive to a quaint country farm with a ground floor artist studio that opens onto a covered patio overlooking our chickens, ducks and alpacas. Take 6th street West out of Lawrence to 442 Hwy, go left. To Stull at 1023 Hwy, go left. Go left at N. 1250 Rd. Second house, use second driveway, drive around to back, parking is marked. About an 15 minute drive from Lawrence.

Public Reception Friday 5pm - 8pm. Hors d'oeuvres and beverages will be served during reception.

JYTTE KLARLUND



\$30 - \$300

259 N 1250 Road, Berryton, KS 66409
jytteklarlund@gmail.com

KATHY PFLAUM



Fiber, metal, mixed media (2-D) \$65 - \$375

259 N 1250 Road, Berryton, KS 66409

SUSAN THEROFF



Painting, drawing \$35 and up

Susan K Theroff, Artist
259 N 1250 Road, Berryton, KS 66409
susanktheroff@gmail.com
facebook.com/susanktheroffartist; instagram.com/susanktheroff

INDEX BY MEDIUM

Ceramics	Egitto	9	Mixed (3-D)	Jarmer	10
Ceramics	Tisdale	17	Mixed (3-D)	Solberg	19
Digital Art	Fair	18	Painting	Art Emer.	12
Digital Art	Hava Studios	1	Painting	Culling	5
Drawing	Art Emer.	12	Painting	Downtown	7
Drawing	Hava Studios	1	Painting	Dunkley	13
Drawing	Theroff	20	Painting	Gaumnitz	17
Drawing	Valley Lane	3	Painting	Hava Studios	1
Fiber	Art Emer.	12	Painting	McKenzie	16
Fiber	Pflaum	20	Painting	Smith	15
Glass	Fair	18	Painting	Solberg	19
Glass	Hava Studios	1	Painting	Theroff	20
Jewelry	Bullock	4	Painting	Willhite	2
Jewelry	Chindamo	4	Painting	Young, R.	14
Jewelry	Kingsbury	8	Photography	Gaumnitz	17
Jewelry	Young, B.	14	Photography	Peterson	9
Metal	Pflaum	20	Photography	Schmiedeler	19
Metal	Taylor	6	Photography	Valley Lane	3
Mixed (2-D)	Bullock	4	Sculpture	Gaumnitz	17
Mixed (2-D)	Culling	5	Sculpture	Hava Studios	1
Mixed (2-D)	Dunkley	13	Sculpture	Jarmer	10
Mixed (2-D)	Pflaum	20	Sculpture	Valley Lane	3
Mixed (2-D)	Pickman	11	Wood	Hava Studios	1
Mixed (2-D)	Solberg	19	Wood	Jarmer	10
Mixed (2-D)	Young, R.	14	Wood	Young, B.	14
Mixed (3-D)	Hava Studios	1			



Lawrence ArtWalk 2019

October 12th and 13th * Saturday 10am-6pm * Sunday Noon-6pm

*Some artists have extended hours and receptions. Please refer to the individual listings for details.